

TR P-type Mono-facial 66M 350-370 Watt

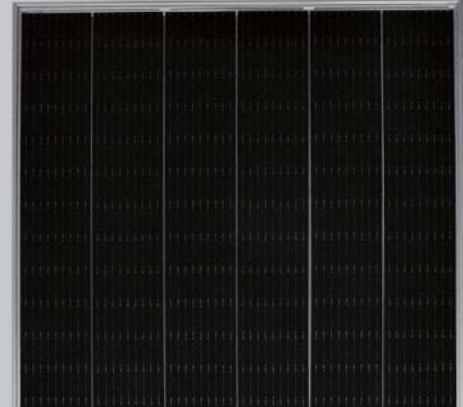
MONOCRYSTALLINE MODULE

Positive power tolerance of 0~+3%

ISO9001:2015、ISO14001:2015、OHSAS18001
certified factory.

IEC61215、IEC61730 certified products.

(Made in China)



KEY FEATURES



9 Busbar Solar Cell

Excellent ability to collect current, reduce the current loss of the cell



High Power Output

Module power increases to 370w, lower LCOE and higher IRR



Higher module Efficiency

Decreasing useless area effectively, module efficiency reaches to 20.64%



Higher Lifetime Power Yield

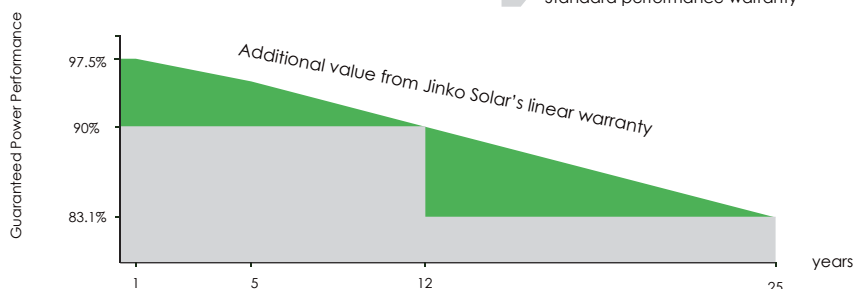
2.5% first year power degradation, 0.6% annual power degradation;
25 year linear power warranty

LINEAR PERFORMANCE WARRANTY

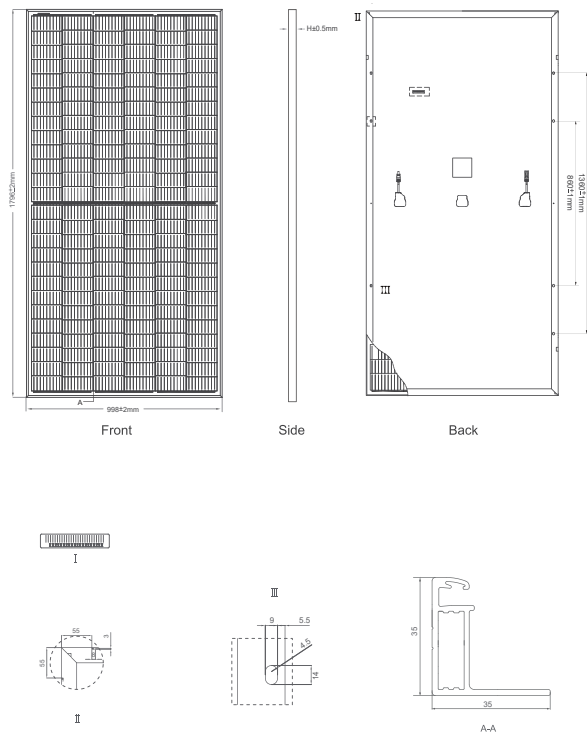
12 Year Product Warranty • 25 Year Linear Power Warranty
0.6% Annual Degradation Over 25 years



■ linear performance warranty
■ Standard performance warranty



Engineering Drawings

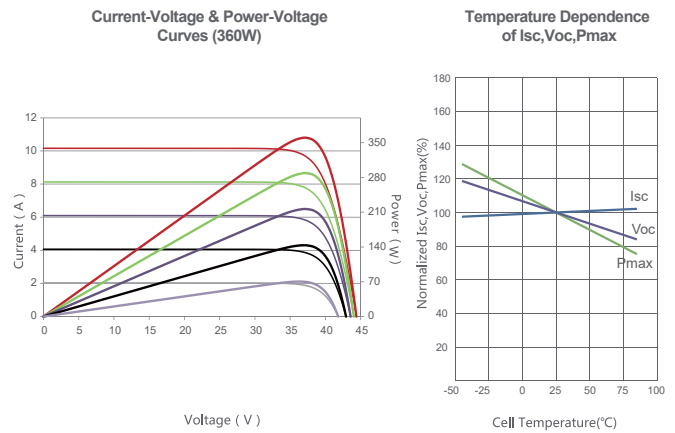


Packaging Configuration

(Two pallets = One stack)

31pcs/pallets, 62pcs/stack, 744pcs/ 40'HQ Container

Electrical Performance & Temperature Dependence



Mechanical Characteristics

Cell Type	P type Mono-crystalline 158.75×158.75mm
No. of cells	132 (6×22)
Dimensions	1796×998×35mm (70.71×39.29×1.37 inch)
Weight	20.3kg (44.75 lbs)
Front Glass	3.2mm, Anti-Reflection Coating, High Transmission, Low Iron, Tempered Glass
Frame	Anodized Aluminium Alloy
Junction Box	IP67 Rated
Output Cables	TUV 1×4.0mm ² (+): 250mm, (-): 150mm or customized length
Connector	Jinko JK03M, Genuine MC4

SPECIFICATIONS

Module Type	JKSM3-CFCA-350		JKSM3-CFCA-355		JKSM3-CFCA-360		JKSM3-CFCA-365		JKSM3-CFCA-370	
	STC	NOCT	STC	NOCT	STC	NOCT	STC	NOCT	STC	NOCT
Maximum Power (Pmax)	350Wp	260Wp	355Wp	264Wp	360Wp	267Wp	365Wp	271Wp	370Wp	275Wp
Maximum Power Voltage (Vmp)	36.85V	34.37V	36.95V	34.54V	37.04V	34.66V	37.14V	34.83V	37.23V	34.99V
Maximum Power Current (Imp)	9.50A	7.56A	9.61A	7.63A	9.72A	7.71A	9.83A	7.78A	9.94A	7.85A
Open-circuit Voltage (Voc)	44.20V	41.63V	44.30V	41.72V	44.40V	41.82V	44.50V	41.91V	44.60V	42.01V
Short-circuit Current (Isc)	9.95A	8.04A	10.03A	8.10A	10.11A	8.17A	10.19A	8.23A	10.27A	8.29A
Module Efficiency STC (%)	19.53%		19.80%		20.08%		20.36%		20.64%	
Operating Temperature(°C)	-40°C~+85°C									
Maximum system voltage	1000VDC (IEC)									
Maximum series fuse rating	20A									
Power tolerance	0~+3%									
Temperature coefficients of Pmax	-0.36%/°C									
Temperature coefficients of Voc	-0.29%/°C									
Temperature coefficients of Isc	0.048%/°C									
Nominal operating cell temperature (NOCT)	45±2°C									

* STC: Irradiance 1000W/m² Cell Temperature 25°C AM=1.5

NOCT: Irradiance 800W/m² Ambient Temperature 20°C AM=1.5 Wind Speed 1m/s

* Power measurement tolerance: ± 3%