

Create account and PV plant with FusionSolar APP



Huawei Technologies Co. Ltd.

Version	Created by	Date	Remarks
02	Huawei e84081311	19.03.2019	FusionSolar APP

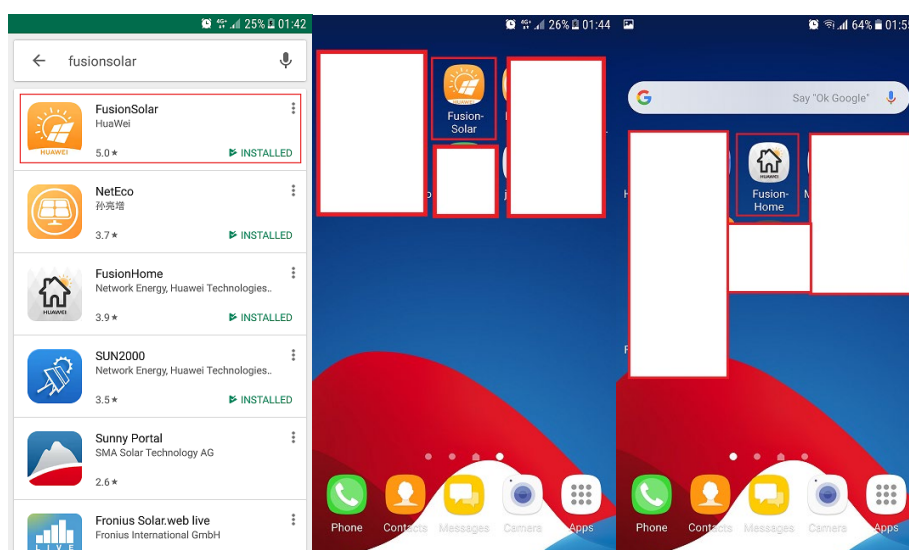
The information in this document may contain predictive statements including, without limitation, statements regarding the future financial and operating results, future product portfolio, new technology, etc. There are a number of factors that could cause actual results and developments to differ materially from those expressed or implied in the predictive statements. Therefore, such information is provided for reference purpose only and constitutes neither an offer nor an acceptance. Huawei may change the information at any time without notice.

This document describes the process how to create an account and the PV plant using the FusionSolar APP.

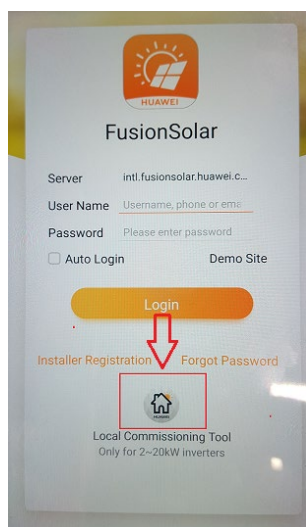
1. Download and install the FusionSolar APP and FusionHome APP

Search for **FusionSolar** in one of the following app stores, download the installation package, and install the FusionSolar App by following the instructions.

- Play Store (Android)
- App Store (iOS)
- Huawei App Store (Android)



2. Open the FusionHome APP and select from main page FusionHome

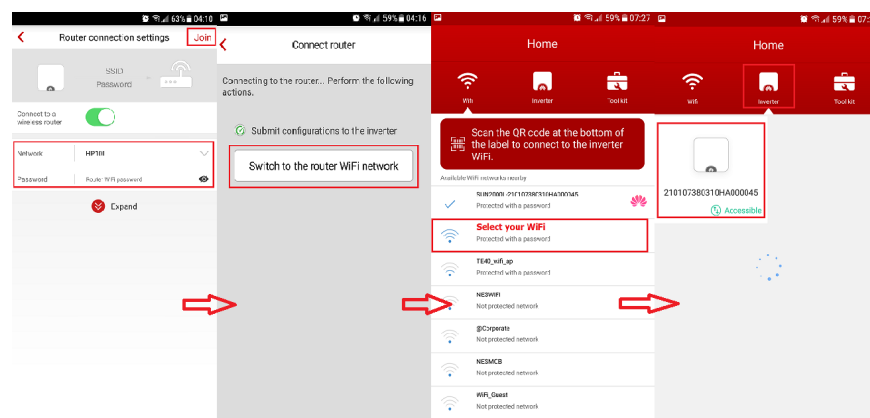


3. Check the connection with Management System

Connect on SUN2000L inverter with FusionHome APP that you open from FusionSolar APP and check the connection of the inverter with the router and management system.

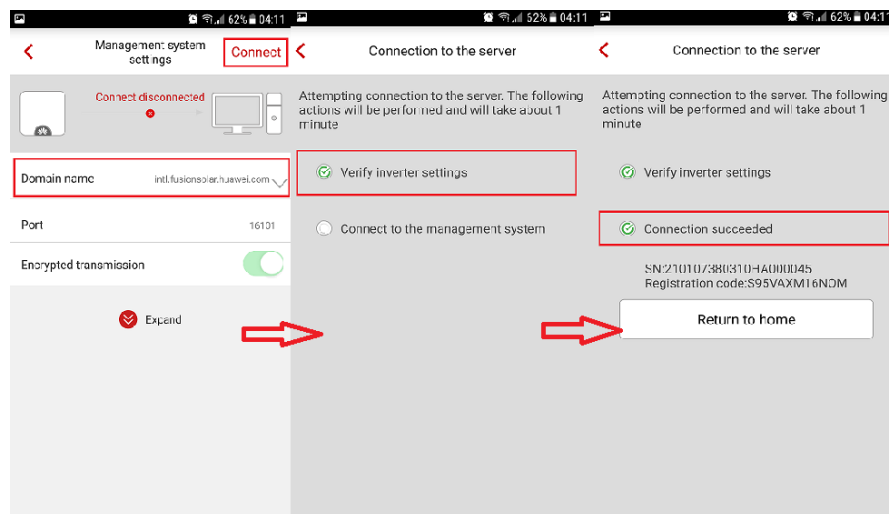
3.1 Check the router connection settings

Login as installer on FusionHome→Communication configuration→Router connection settings→set your WiFi network→Join→choose Switch to the router WiFi network→select your WiFi network from the list→connect again on inverter



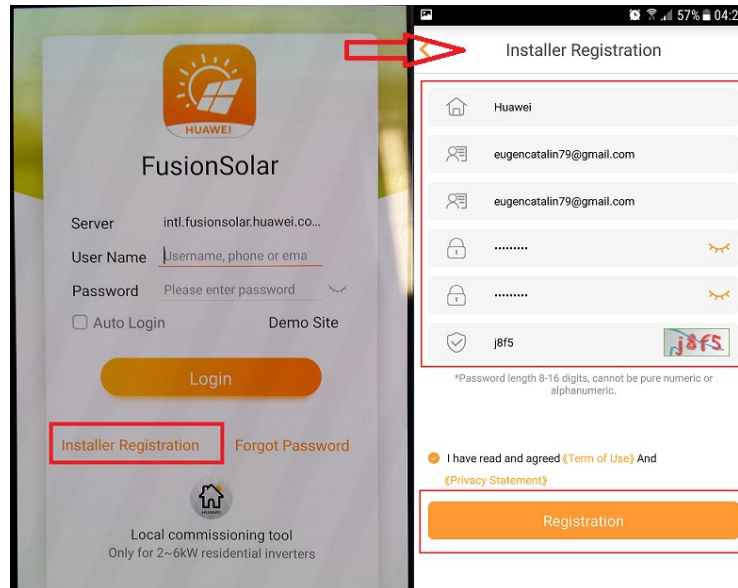
3.2 Check the connection with Management System

From Communication configuration menu choose Management system settings→set domain name **intl.fusionsolar.huawei.com**→Connect→inverter start automatically to verify settings→Connection succeeded

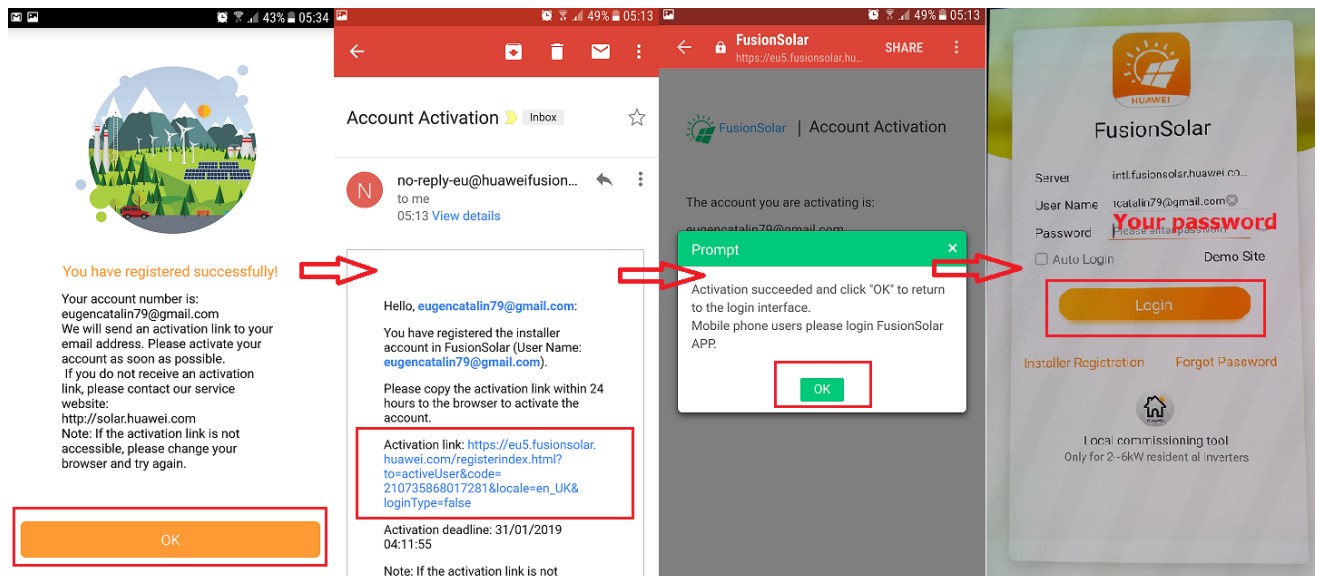


4. Create account with FusionSolar APP

Open FusionSolar APP and choose Installer Registration → fill all the requested data → Registration

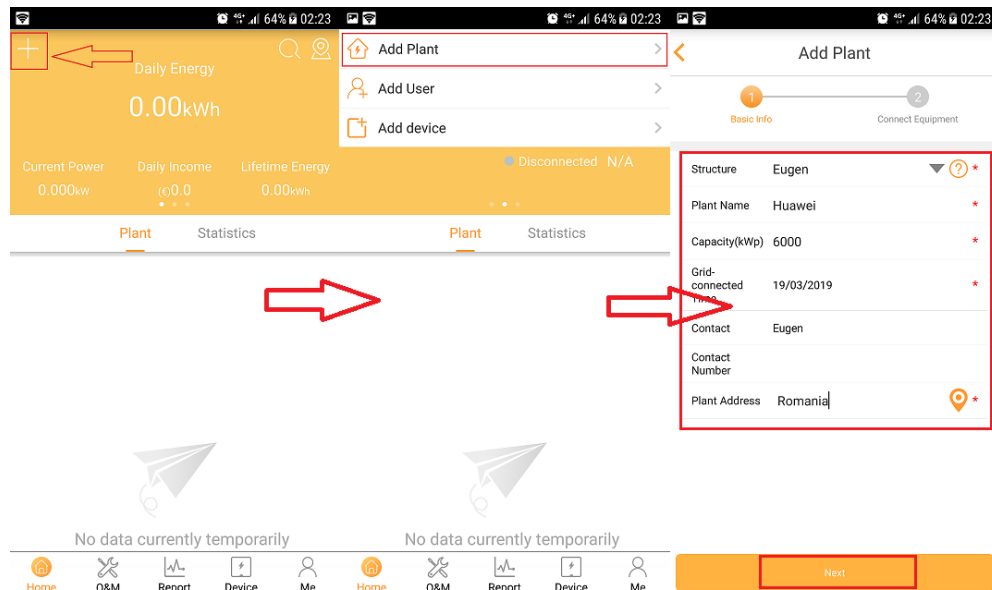


You will receive the message that “**You have registered successfully**” → go to your email → choose activation link to activate your account → confirm → login with user and password that you just created

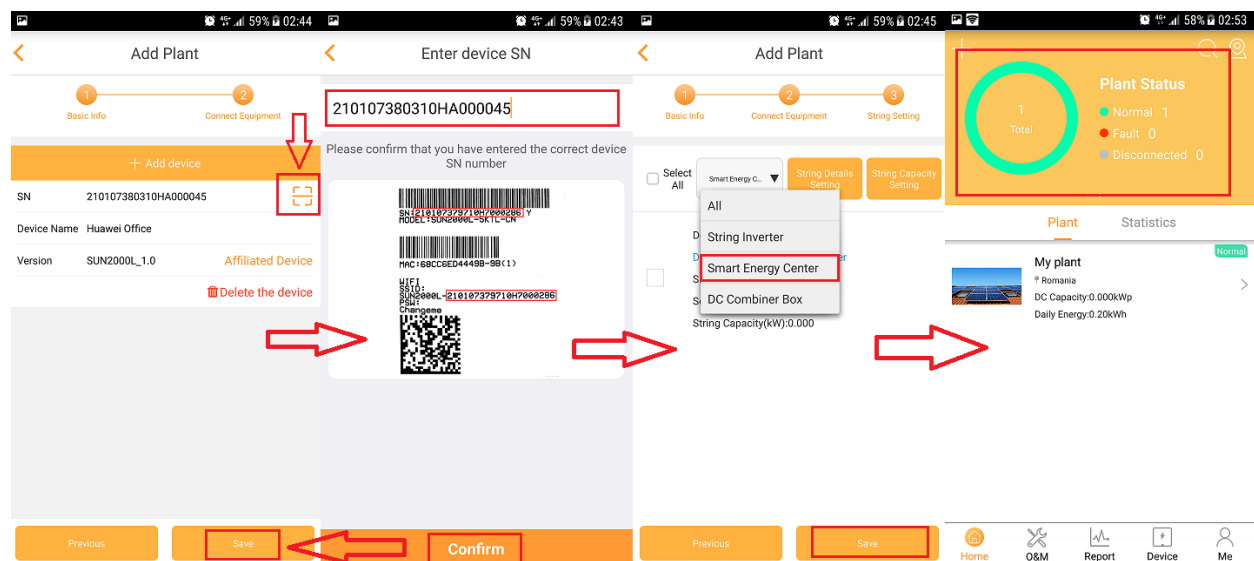


5. Create PV plant

Choose from the main page “+” → Add Plant → fill the plant details (structure is the same with your account) → select Next

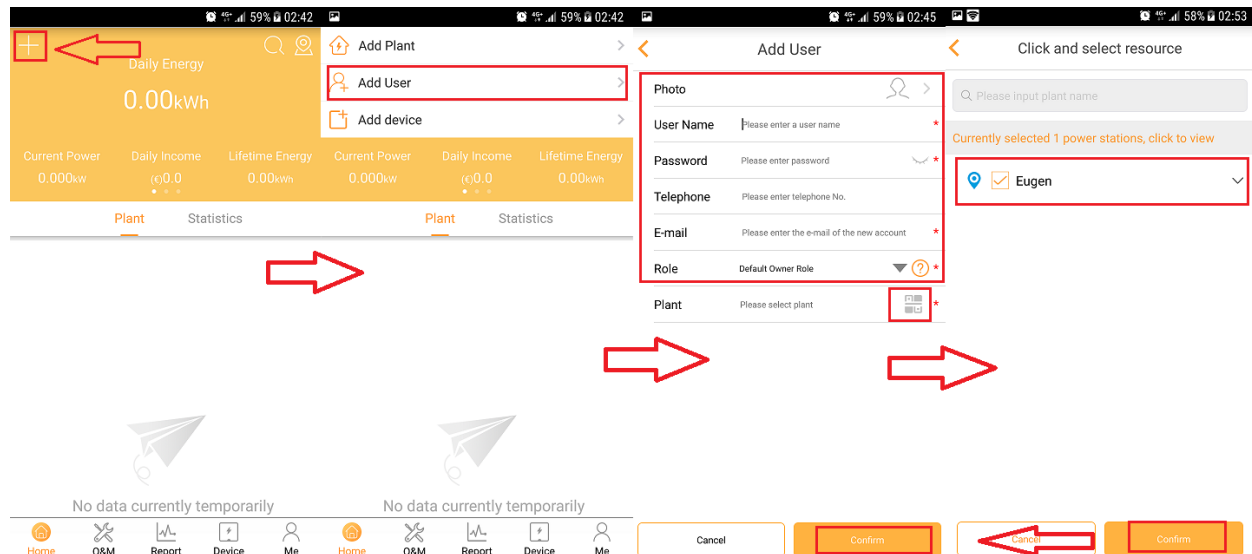


Select SN → Enter device SN (scan or you can enter manually) → Confirm the SN → Save → Select Smart Energy Center (SUN2000L) → Save → Check the plant status



6. Create account for the customer

From the main page select "+" → Add User → fill the requested data → Role: Default owner role → select the plant and confirm → Confirm → account successfully created



Check the User status:

From the main page choose Me → User Mgmt. → check if the user is Enable

