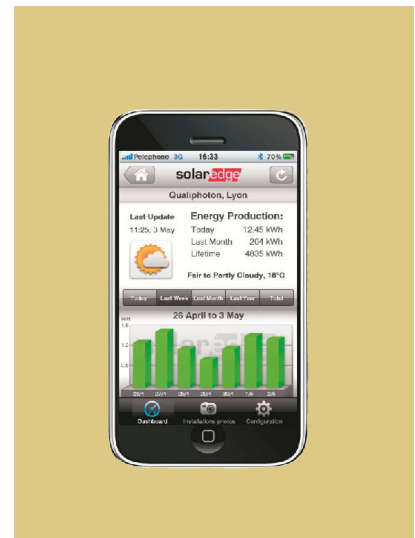
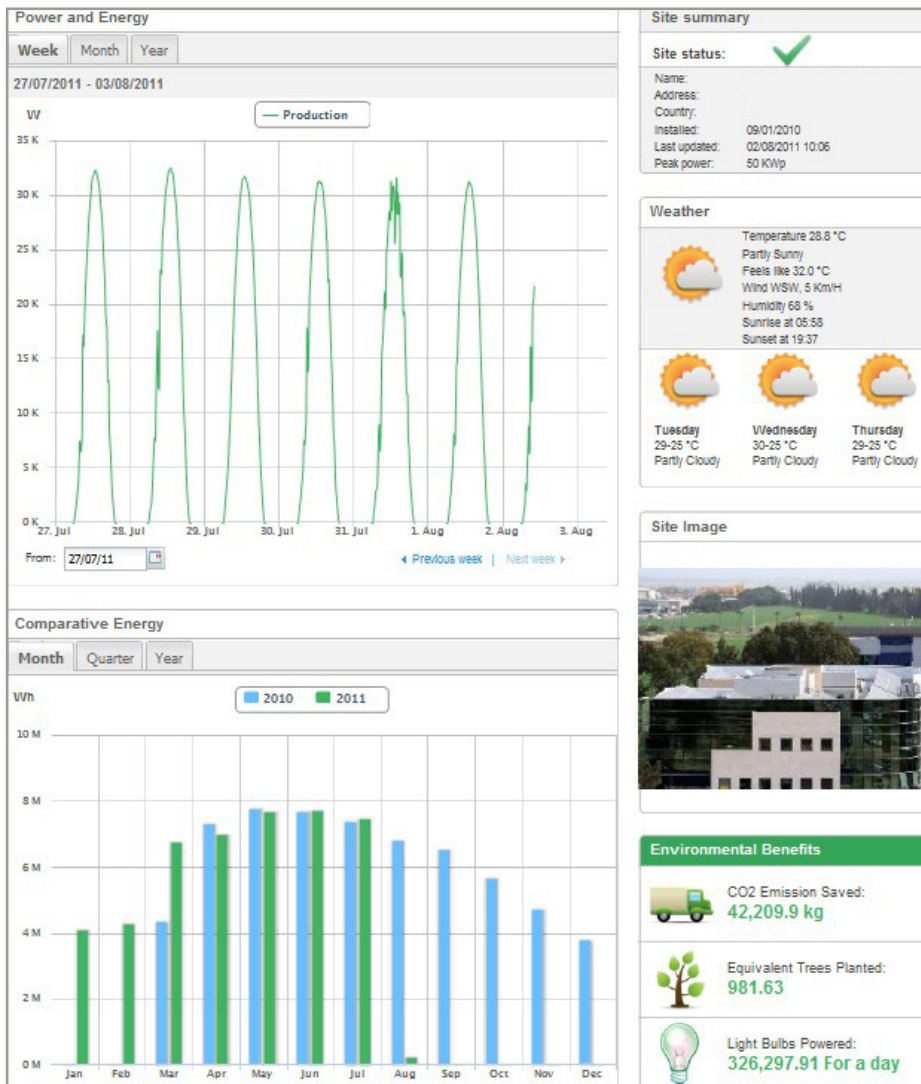
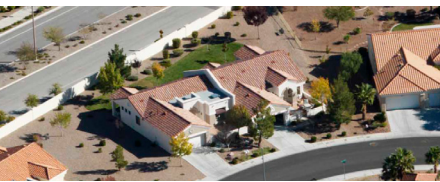


SolarEdge Monitoring Portal Product Overview

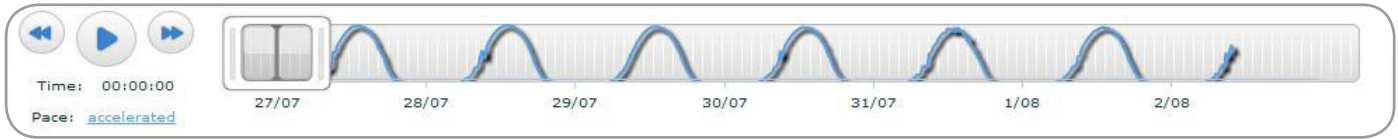


- Monitors the technical and financial performance of the PV sites
- Web-based application provides PV Performance monitoring of each and every PV module
- Physical mapping of the modules enables to instantly visualize and pinpoint irregular patterns
- Intelligent data analysis software automatically detects and locates significant phenomena, supplying root cause analysis capabilities
- Easy access via web browser from PC or mobile device



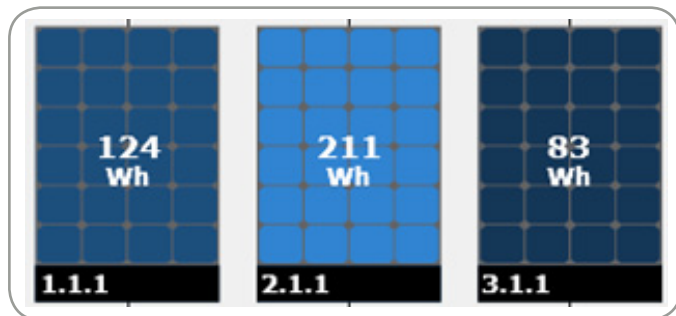
SolarEdge Monitoring Portal Product Overview

PLAYBACK BAR



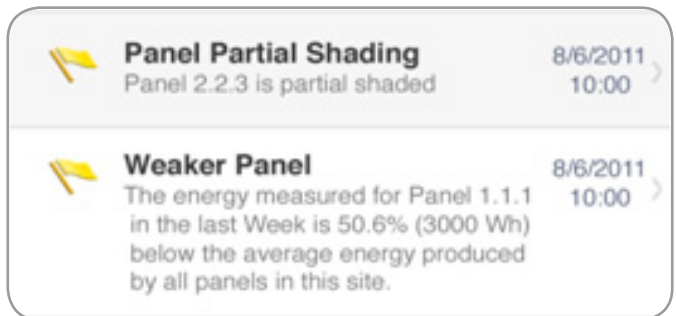
Playback bar allows to visualize site performance over a day or a week, highlighting shading, mismatch and underperformance issues.

MODULES COLOR CODING



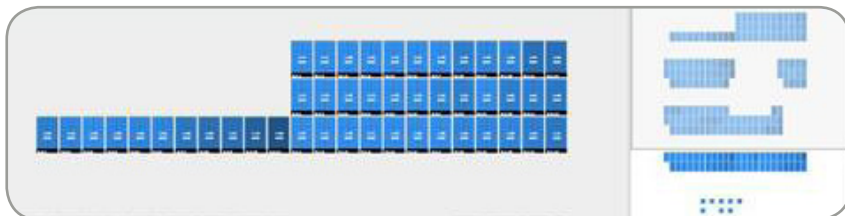
Color coding instantly visualizes modules with lower outputs in either daily, weekly, monthly or yearly views.

SMART ALERTS



In depth analysis allows insightful warnings, here shown on the iPhone monitoring application, offering production stats and site map as well.

PHYSICAL/LOGICAL SITE MAPPING



Physical mapping provides a bird's eye view of the actual location of each component, allows immediate useful insights about the plant performance, and makes troubleshooting a breeze.

GRAPHIC PERFORMANCE ANALYSIS



Powerful graphing engine enables analysis of various measures such as voltage, current, power and energy in any scale from module to plant level. Multiple measurements may be displayed on a single graph. Zooming is limited only by the update interval of 5 minutes.

Visit
<http://www.solaredge.com/groups/monitoring/module-monitoring>
for a demo